

Transpower® Switchgear Industries

An ISO 9001:2008 Certified Company

SPECIALIST IN TRANSFORMER OIL FILTRATION

Incorporated in 1996, Transpower Switchgear Industries, is an ISO 9001:2008 certified organization, which is engaged in manufacturing, supplying, trading and exporting of an ample range of supreme quality Distribution Transformers, Control Transformer, Power Transformer, Air Break Switch, Street Light Poles and Electrical Isolators. In addition to this, we offer Transpower repair and maintenance services. An extensive range of transformer and allied products offered by ISI marked, which testifies our commitment towards offering best quality products. Known for their superior conductivity, the products offered by us are widely appreciated among the huge client-base we have accomplished to garner.

Attributing to the team of highly experienced and knowledgeable engineers, we are capable of making a high quality range of transformers and allied products. Dedicated to serve the requirements and demands of our esteemed patrons, we assure the utmost quality of the entire range of transformer and allied products offered. We exports our products to Dubai.



PRODUCTS (MANUFACTURING)

Power & Distribution Transformer

Up to 2500 KVA, 11KV, 22KV & 33KV Line

- Distribution Transformer
- Power Transformer
- Special Purpose Transformer
- Voltage Stabilizer.

Street Light Pole

- M. S. Street Light Pole
- G. I. Street Light Pole
- Octagonal Pole

ISOLATORS: Up to 33KV Line:-

- Gang Operated Switch (G.O.D)
- Single Break Tilting/Double Break
- Rotating & Turn Twist Type for M.S.E.B substation
- Drop Out Fuse (D.O.F)/ Horn Gap Fuse
- Combined GODOF
- Knife Switch
- Turn Twist

PRODUCTS (DEALERS IN)

H.T. & L.T. MATERIALS

- ▶ Cable
- ▶ Capacitors
- ▶ Cable Heat Shrinkable Joint Kit
- ▶ Discharge Rod
- ▶ Operating Rod
- ▶ Cable Tray
- ▶ Transformer Oil Filtration Plant
- ▶ Safety Equipment i.e.
 - Rubber Mattings
 - Hand Gloves
 - Fire Extinguisher
 - Shock Treatment Chart
 - First Aid Box
 - Danger Board

EARTHING MATERIALS /OVERHEAD LINE MATERIALS

- L. T & H. T. Insulators
- G. I. Hardware & Fitting
- C. I. G. I. Plates & G. I. Strips
- G. I. Stay Set
- Turn Bracket
- Fuse Element & Fuse Barrel
- G. I. Wire & Stay Wire
- Earthing Pipe
- L. T. & H.T. Cable Marker
- Street Light C. I. Box
- G. I. Pin 11KV / 22Kv
- Tension Hardware
 - 1U / 2U & 3U Bolt Tension

ELECTRICAL ISOLATORS

TRANSPower SWITCHGEAR INDUSTRIES is offering a featured range of **Electrical Isolators**. These Electrical Isolators are made, keeping the requirements of clients in mind. To provide the complete satisfaction to valued clients, we have improvised many resourceful features in Electrical Isolators.

- ▶ Gang Operated Switch
- ▶ Single Air Break Switch
- ▶ Combine G.O.D. & D.O.F

Visit below link for technical details.

<http://www.transpower.biz/pdf/electrical-isolator.pdf>





SWAGED TABULAR POLE

- ▶ Steel tubular swaged welded poles and stepped poles – (M.S. / G.I. / HDGI) For L.T. / H.T. Power transmission lines and Street lightings confirming to Indian standard 2713/80 and as per enquiry/drawings.
- ▶ Fancy / Decorative poles for garden lighting and street lighting (Cast Iron / M.S / G.I.)
- ▶ High Mast poles for area lighting / stadium lighting.
- ▶ FRP Junction box / Inbuilt Junction box for above poles.
- ▶ Hot Dip Galvanizing, Powder Coating, Zinc Spray, Sand Blasting, PU Painting process, Normal Painting (Aluminium, epoxy, zinc chromate, protectomestic, rubber, etc) for above poles.
- ▶ Bend, bracket, cross arms for the above poles / Fancy brackets (M.S. / G.I. / HDGI)
- ▶ Base plate, cap, collar, sleeve, nut bolt, foundation bolts, cable entry pipe and other accessories for the above poles .
- ▶ The poles shall then be painted with black bituminous paint till the planting depth and remaining portion shall be painted with red oxide primer for protection against Corrrission. The poles can also be hot dip galvanized or painted as per the requirements.

For technical details visit below link.

<http://www.transpower.biz/pdf/street%20light%20poles.pdf>

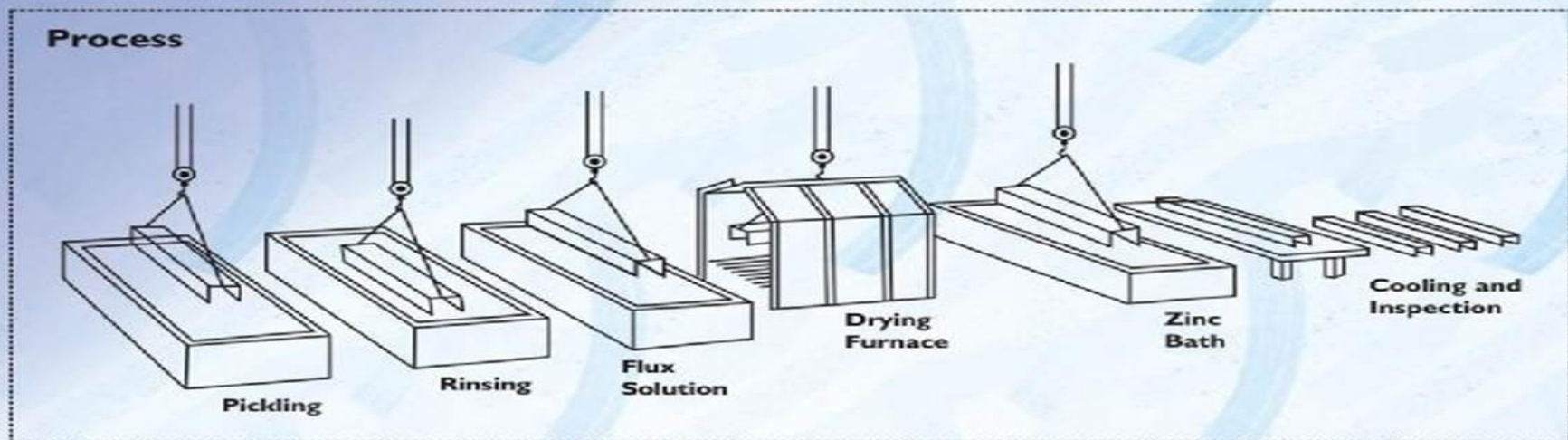
For Lightning of roads and Large areas such as Car Parks, for lightning of roads & large areas such as Car Parks and stock yards IS:2713 (PART II) 1980 IS used.

- ▶ plumbing; G.I. as per IS 1239
- ▶ Fire fighting pipe line; G.I. Pipes as per IS: 1239
- ▶ Scaffolding & Structural purposes; Tubes as per IS - 4923/ IS – 1161
- ▶ Solid waste discharge system; SWR Pipes & Fittings as per IS – 13592/1992

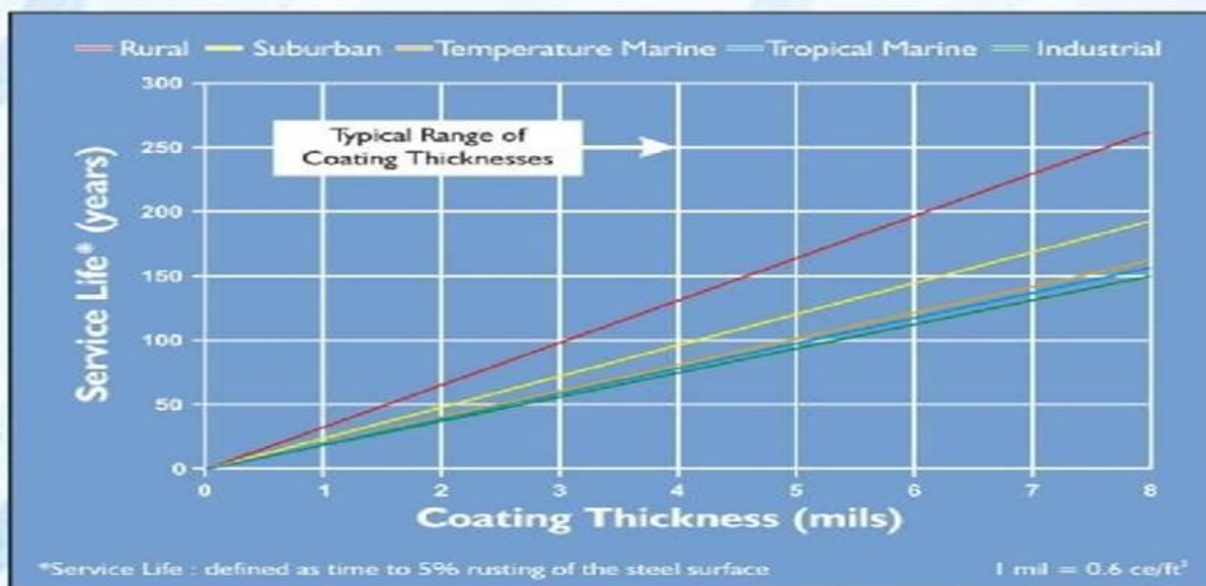
Joint In Swaged Pole are made on the following basis

OUTSIDE DIAMETER OF SMALLER TUBE IN JOINT	LENGTH OF JOINT
Mm	Mm
76.1	200
88.9	230
114.3	300
139.7	350
165.1	400
193.7	450

HOT DIP GALVANIZING PLANT 12.5 MTR. LONG

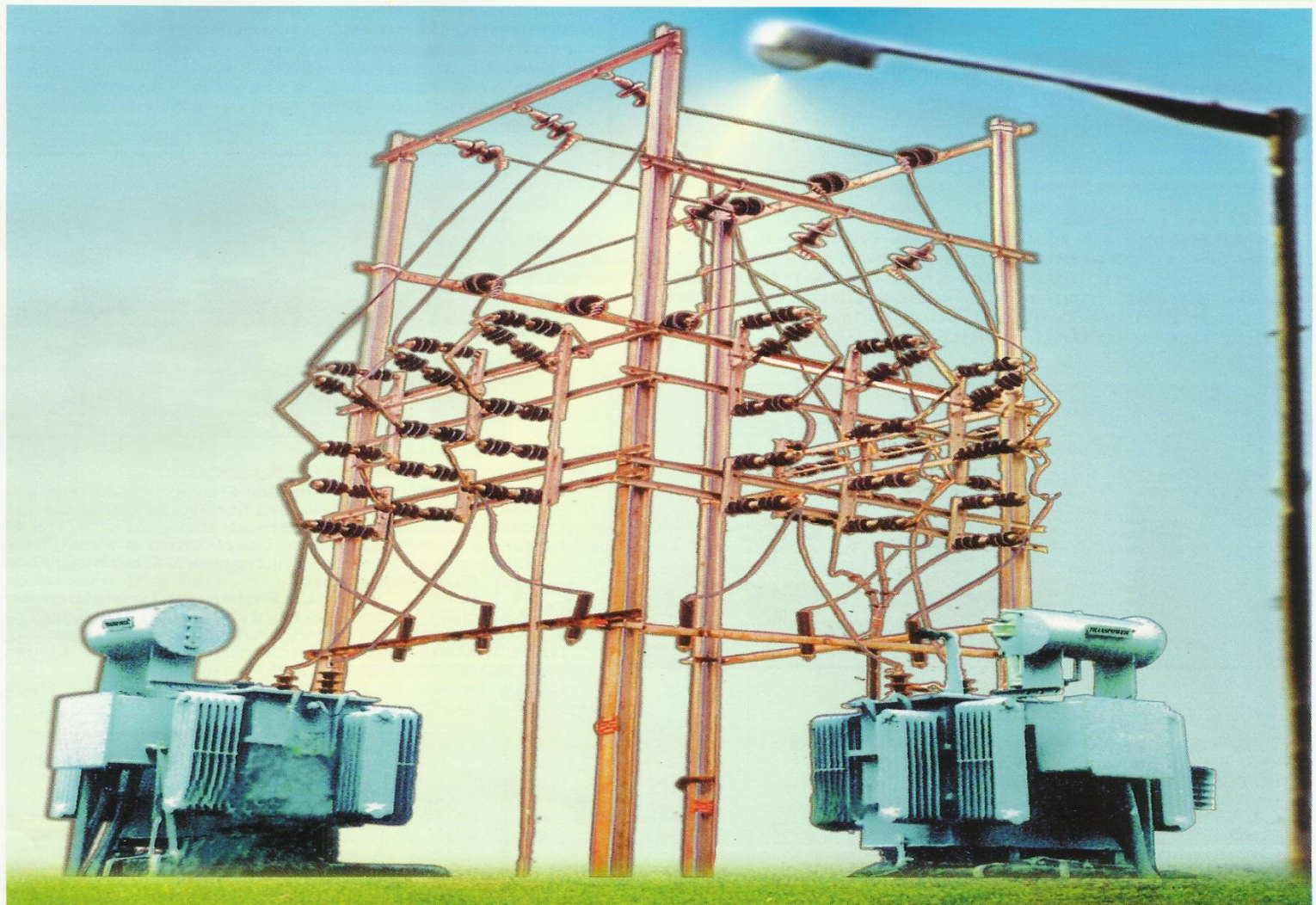


The graph below illustrates the expected service of a galvanized coating as a function of coating thickness in varying *atmospheric* conditions. As you can see, the life of a coating is linearly related to its thickness. Very simply, the thicker the coating, the longer it will last.



TRANSPOWER[®]

**HIGH
VOLTAGE
AIR
BREAK
SWITCHES
& DROP-
OUT
FUSES**



TRANSPOWER[®] SWITCHGEAR INDUSTRIES

E-mail : transp@mtnl.net.in / transpower@rediffmail.com / www.transpower.in

Tel fax : 022-25125237 / 25107052

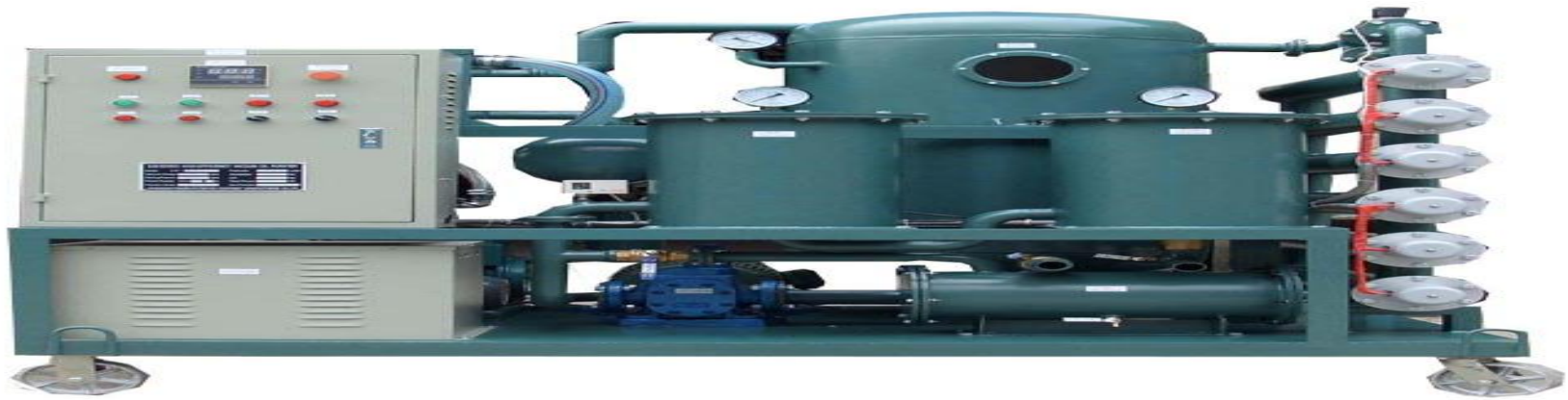
Tel :25125237 Email : skudekar@gmail.com web-www.transpower.biz



AIR BREAK SWITCHES

THE RANGE AVAILABLE WITH US FOLLOWING TYPES

- ▶ Horizontal / vertical type, single break
- ▶ Tilting Type as per IS9921 & 1818
- ▶ Tilting type / double break
- ▶ Rotating type single/double break consisting of hot dip galvanized channel iron base
- ▶ Original post type HT insulators
- ▶ Copper or copper alloy high pressure heavily tinned contacts
- ▶ Plated mild steel arcing horns capable of breaking the magnetizing current complete with horizontal connecting bar GI Pipe as down rod levers
- ▶ Coupling and operating handle with locking arrangements in voltages up to and including 33KV line switchyard
- ▶ Current up to and including 1600 Amps manufactured as per IS 9921& 1818



TRANSFORMER OIL FILTRATION

Transpower does Transformer Oil Filtration up to 50,000 KVA Transformer. We are having 3000 Litre/- Per Hour double Stage Oil Filtration & Dehydration Plants. We are also doing maintenance, repairing of transformer ACB, OCB, Panel boards, testing and Etc.

- ▶ Transformer-oil filtration plant operations
- ▶ Remove impurities like dirt, moisture, air and other gases from mineral based silicon and synthetic oils
- ▶ Onsite operation, the plant can be towed with tractor or jeep
- ▶ Filtering and dehydrating Transformer Oil
- ▶ Improve dielectric strength as per IS: 335/1983 & IS1866/2000
- ▶ High-Vacuum Transformer Oil Filtration
- ▶ All types of electrical insulating oils
- ▶ Systems are in flow rates from 300 LPH to 8000 LPH
- ▶ Custom-built plants can be provided as per customer's specific requirement, such as more flow-rates.

For technical details visit below link.

<http://www.transpower.biz/pdf/transformer-oil-filtration.jpg>

TRANSPOWER[®] OIL FILTRATION & CONTRACTORS

1200 LPH Portable Filtration Plant

A Major cause of Transformer Failure is due to the presence of Moisture which destroys the insulating property of the oil & reduce the **DIE ELECTRIC STRENGTH** & the presence of particularize which reduce the heat Transformer Property and also result in wear of the contacts and coil due to abrasion and therefore, it is necessary to Filter the Transformer Oil as per IS:335 to reduce the moisture as well as acidity & increase the die electric strength to extend the **TRANSFORMER LIFE**.

While cleaning systems suitable for online & offline filtrations.



OIL TEST KIT :- The Oil Test Set is the microprocessor based test equipment that is designed to test the dielectric strength of insulating oil. The motorized oil test kit is of single phase and 240 volts. The tried and tested set yield a distortion free output. The optional magnetic stirrer facility is also available on request.

Specification :- **Input** : 220/230 AC-1 Phase 50Hz,
Output : 0-60/75/100 KV centre tap earthed;
Capacity : 1KVA; **Indication** : Mains ON and HT ON Lamps

- ☛ Transformer Repairing, Attending Heavy Leakages, maintenance of Transformer, Replacement of Bushing, Gaskets, Overhauling the Transformer, Repair of Change Over Switch and Cable Box.
- ☛ ACB, OCB, Panel Board & CTPT.
- ☛ Isolators, GOD, DOF, Maintenance, Spares Replacement, Greasing for smooth operation.
- ☛ Cable Lying, Cable Jointing.
- ☛ Street Light Pole Erection
- ☛ Earthing Testing & New Earthing Providing.
- ☛ **PAINTINGS**
Transformer Painting, Panel Board Painting, 2 Pole & 4 Pole Structure Painting.

“Taking Annual Maintenance Contract”



TRANSPOWER[®]

Head Office : 8/2, Shri Krishna Niwas, Ram Joshi Marg, Bhatwadi, Ghatkopar (W), Mumbai-84.
Tel.: 022-2512 5237 / 2510 7952 • Fax : 022-2502 2170 Mob.: 9820539902, 9920539902
E-mail : transp@mtnl.net.in • Web: www.transpowerindia.com



OIL TEST KIT

- ▶ TRANSPower SWITCHGEAR INDUSTRIES is engaged in the manufacturing of the Oil Test Kit, which are known as the microprocessor based test equipment. Designed by experts, these Oil Test Sets are subjected to provide complete satisfaction to the clients. Based on the client's satisfaction mantra, we are claimed as the highly trusted Oil Test Set manufacturer and exporter in markets.

Featured

- ▶ Dielectric strength of insulating oil
- ▶ Motorized oil test kit is of single phase and 240 volts
- ▶ Tried and tested set yield a distortion free output
- ▶ Optional magnetic stirrer facility
- ▶ ISI marked
- ▶ Use To test the dielectric strength of insulating oil

Specification

Input	220/230 AC-1 Phase 50Hz,
Output	0-60/75/100 KV centre tap earthed
Capacity	1KVA
Indication	Mains ON and HT ON Lamps



FEEDER PILLAR

Transpower Switchgear Industries is enlisted as one amidst the predominant Feeder Pillar Manufacturer, Supplier and Exporters in India. The Feeder Pillars are extensively installed for industrial, township, housing societies, and lighting applications. Our Distribution Feeder Pillars are designed, engineered, and manufactured for 4-Way, 6-Way, 8-way as well as customized power distribution applications. Moreover, we provide Feeder Pillar Panels at the most reasonable prices.

Features:

- ▶ Rear mounted phase busbars to ensure safety, as well as ease of inspection, maintenance and installation of equipment through front-end jointing for all outgoing connections.
- ▶ Canopy type ceiling, double-door construction, weather-proof coating, rubber seal gaskets and other features for reliable performance in all outdoor applications.
- ▶ Provision of neutral, neutral earth, earth busbars for safely carrying any fault current to Earthing provided through channel base.
- ▶ Tamper proof locks, strong moulded DMC phase barriers across fuse-links and other features for added safety and reliance.
- ▶ Feeder pillars are designed to take care of all types of cabling arrangements through suitable cable clamps.

OUR ACHIEVEMENT

- ▶ With sincere efforts, we have achieved rating from the Biggest Rating Agency – CRISIL (A Standard & Poor's Company). Below mentioned are some of our strengths highlighted after the research carried out by CRISIL, under the scheme of NSIC :
- ▶ Experienced promoters with rich experience of 13 Years in the same line of Business
- ▶ Long and established track record of the business spanning 13 Years indicating the firm's ability to survive business cycles
- ▶ Diverse product profile, which includes Transformers Switchgears, Cables, Lightning Poles, Capacitors, Air Break Switch (G. O. D.) and Drop Out Fuse (D. O. F.), Leading to stability in revenues

STRENGTH

- ▶ Competent promoters having 13 Years of Experience in the same line of Business
- ▶ Long and established track record of the business spanning 13 Years indicating the firm's ability to survive business cycles
- ▶ Diverse product Profile, which includes Transformers Switchgears, Cables, Lightning Poles, Capacitors, Air Break Switch (G. O. D.) and Drop Out Fuse (D. O. F.), Leading to stability in revenues

INFRASTRUCTURE

Our robust infrastructural base has played a vital role in strengthening the market position of the company. The state-of-the-art infrastructure includes designing & manufacturing unit that is well supported by the CAD/CAM Facility that help us in the latest innovations. Our manufacturing unit covers an area of 700 units with installed capacity of 1000 units. Some of the machines installed in our manufacturing unit are:

- ▶ Blending Machine
- ▶ Cutting Machine
- ▶ Lathe Machine and others

Various other machines and equipment installed in our unit are tabulated below :

- ▶ Heavy press
- ▶ ¾" drill machine
- ▶ Portable grinder
- ▶ Shearing hand cutting machine

- ▶ Thaparia derby set
- ▶ Magger- Nippon make
- ▶ Motor cycle hero Honda "passion plus"
- ▶ Tool box for spares
- ▶ Hexo cutting machine
- ▶ Bench grinder
- ▶ Single phase welding machine
- ▶ 1h.p 3 phase electric motors
- ▶ 600 ltrs transformer oil filtration machine
- ▶ Commander jeep
- ▶ Spray painting machine (compressor)
- ▶ Three phase welding grinder
- ▶ 28 amp. Dimmer state
- ▶ 1200 ltrs transformer oil filtration machine
- ▶ ¼" 1phase electric motor

QUALITY ASSURANCE

Owing to the priority to serve quality products, various stringent quality tests are conducted at various levels of production to the final stage of dispatch. For fuller assurance of the quality, the Power Products are tested under the supervision of our quality control executives on the parameters mentioned below:

- ▶ Tensile Strength
- ▶ Conductivity
- ▶ Heat Resistance
- ▶ Fire Retardant
- ▶ Electrical Performance
- ▶ Power Density

Moreover, our ISOLATORS (GOD & DOF) are tested in National Test House, of Govt. of India and all Post Insulators are tested by CPRI. We are very happy to announce that our firm is Rated by the Biggest Rating Agency – CRISIL, A Standard & Poor's Company.

CLIENT LIST

Rendering quality products and prompt services, we have ascertained huge clientele in the regions of India, Dubai, Kuwait, and Gulf. Some of our major clients are as listed below that reflect our credibility:

- ▶ M.I.D.C. Maharashtra Industrial Development Construction (A Government Of Maharashtra Under Taking)
- ▶ B.A.R.C – Bhabha Atomic Research Centre (Under State Govt.)
- ▶ Nuclear Power Corporation of India Ltd. (A. Government Of India Under Take)
- ▶ Indian Rly and Construction Co. Ltd
- ▶ Aravali Power project LTD. A Joint Venture of NTPC, HPGCL & IPGCL
- ▶ Indian Oil Ltd.
- ▶ Jindal Power Ltd

Segments Catered : With our quality assured electrical products, we ful fill the demands of various segments, which include:

- ▶ Engineering industry
- ▶ Medical industry
- ▶ Infrastructure and many others

Company Details

➤ **Registered Office**

8/2, Shrikrishna Niwas, Ramjoshi Marg, Bhatwadi, Ghatkopar (W), Mumbai– 400 084

Contact details- ☎ 022-25125237

Email id-

- ▶ skudekar@gmail.com
- ▶ transpower@rediffmail.com

➤ **Branch office-**

Shop NO.1/gat no.627/1/1, near bharat forge, opp'kishor pump ltd. Pune Nasik Road kuruli Tal khed Dist pune.

Contact details- 8108176999

- ▶ Email id- transpowerpune@gmail.com